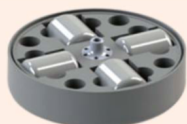


# PF Soil Centrifuge

It is widely used in the fields of soil moisture dynamic simulation, meteorology, climatology, soil geography, hydrology, agricultural science and technology. The detection of soil pF curve is determined by the relationship among soil suction, bulk density and water content, thus obtaining high precision soil moisture characteristic curve pF. Soil water characteristic curve is usually measured by pressure membrane and centrifuge. Compared with other methods, the centrifuge method is more simple and faster than the other methods, and can measure a wide range of suction.

## Rotors Specification

### Figure



Soil dehydration roto

### Parameter

Rotor capacity : 4×100mL  
Max Speed : 10000r/min  
Max RCF : 14530×g  
vessel size : φ50×51mm  
Serial No : H012-003-072-301



## Specification

Model	HR21M PF Soil Centrifuge
Max Capacity	4×100mL
Max RCF	14530×g
Max Speed (r/min)	10000r/min
Measuring range	pF value2.0-4.2 ( 0.1bar-15bar )
Measuring sample	4
Speed Adjustment	±50rrpm steps (can be customized)
Operation program	16
Control and drive system	Large torque AC variable frequency motor, microcomputer control
Cooling System	R404a
Temp control range	-20℃ ~ +40℃
Temp adjustment accuracy	±1℃
Timer Range	1min-99h59min, with continuous run function
Total Power	4.0kW
Power supply	AC220V/50Hz/30A
Noise level	<65dB ( A )
Weight	240kg
Dimention (L×W×H)	820×710×950mm
Package dimensions	