



Cell counter—CytoCube

## Cell Counter — CytoCube

One-Click Counting

- Independent R&D
- LED indicator design
- Compatible with multiple cell morphologies
- Algorithms automatically filter cell debris and background noise
- Based on the Trypan Blue exclusion method
- Faster, smaller, more economical

### System parameter

Concentration:  $1 \times 10^4 - 3 \times 10^7 / \text{ml}$

Diameter: 5-200um

Range of cell viability: 0-100%

Sample volume: 25ul

CV values:  $\leq 5\%$

Consumables: EasyFive counting slide

Measuring time per sample: 2s

Sample per consumable: 6 samples

Weight: 1.8kg

Data output: USB output

Size: 255\*164\*97mm

# Cell Counter — CytoCube (Faster, smaller, more economical)

## Intelligent model

One-Click counting

Time for a sample is only 2 seconds; A counting slide is for 6 samples; LED indicator light design ensures the stability of data.



Add sample



Insert the slide

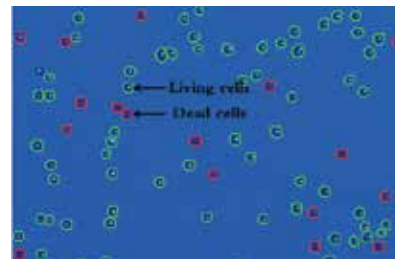
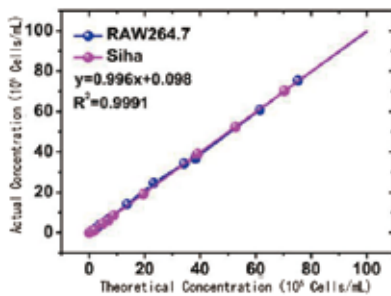


One key analysis and results

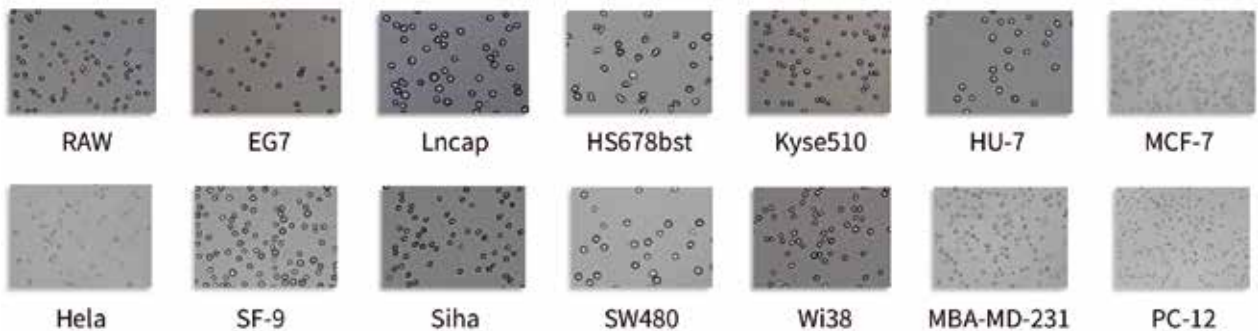
## Reliability

Technology guarantees the stable and reliable results

- Five megapixels industrial grade CMOS is used to capture images;
- Indicator indicates the sample area which ensure the stability of data;
- Optimized optical path improves imaging quality and narrows size.



Distinguish dead and living cells by trypan blue



Proven cell line

## User experience

Humanized software and analysis system

- Detection for cell concentration, viability, diameter, roundness...
- User classification management: actions is recorded according to different management authority to ensure data confidentiality and objectivity;
- Various data export formats including PDF, EXCEL, JPG.