

## Roller

### >>> KJMR-I Roller Mixer

#### Features:

- It can carry out two functions (Roll and Swing) at same time, adapted to mixing of blood samples, adhesive materials and Liquid - solid suspensions.
- Driven by High performance AC Motor, Running stable, No noise, Long lifetime.
- 5 rolls, compact structure makes it less space occupation. It can be put in cold closet or incubators, suitable for various applications.
- Reasonable space between the rolls makes it fit for different size tubes.

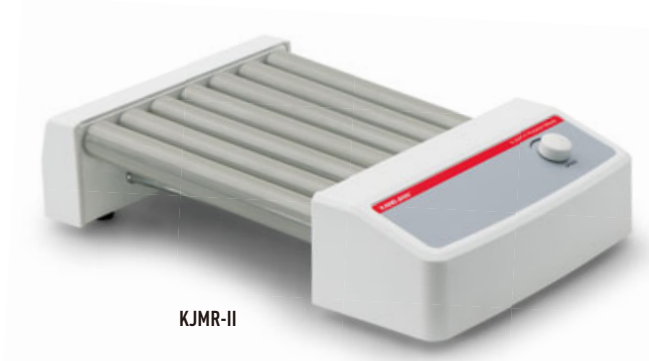


KJMR-I

### >>> KJMR-II Roller Mixer

#### Features:

- It can carry out two functions (Roll and Swing), adapted to mixing of blood samples, adhesive materials and Liquid - solid suspensions.
- Driven by High performance DC declaration Motor, Running stable, No noise, Long lifetime.
- 7 rolls, compact structure makes it less space occupation, suitable for various applications.
- Reasonable space between the rolls makes it fit for different size tubes.
- According to actual requirements, We can customize the bidirectional Cross Rolling Mode. The roller can be extended within a certain range to fit for more tubes.



KJMR-II

### >>> KJMR-IIA Roller Mixer

#### Features:

- It can carry out two functions (Roll and Swing), adapted to mixing of blood samples, adhesive materials and Liquid - solid suspensions.
- Driven by High performance DC declaration Motor, Running stable, No noise, Long lifetime.
- 7 rolls, compact structure makes it less space occupation, suitable for various applications.
- LED with backlight can display the current speed, time and operation mode, convenient for reading and setting.
- Precise digital time and speed setting can easily carry out the continuous operation mode.
- Wide voltage design avoids the impact of unstable voltage on the equipment.
- Reasonable space between the rolls makes it fit for different size tubes.
- According to actual requirements, We can customize the bidirectional Cross Rolling Mode. The roller can be extended within a certain range to fit for more tubes.



KJMR-IIA

#### Technical Data:

	KJMR-I	KJMR-II	KJMR-IIA
Operation method:	Roll+swing	Roll+swing	Roll+swing
Swing angle:	±11°	22mm±1mm	22mm±1mm
Rating speed:	36rpm	20-80rpm	20-100rpm
Max. Loading weight:	0.8Kg	1.5Kg	1.5kg
Running mode:	Continuous	Continuous	Continuous, Timing
Timing range:	—	—	0-999min
Input voltage (frequency):	AC 220V±10%(50/60Hz)	AC 220V±10%(50/60Hz)	AC100-240V(50/60Hz)
Permissible relative moisture:	80%	80%	80%
Output power:	6W	10W	10W
Roll length:	230mm	Standard 236mm, customizable	Standard 236mm, customizable
Protective class:	IP21	IP21	IP21
Permissible ambient temperature:	5-50°C	5-50°C	5-50°C
Dimensions:	260×155×140mm	410×270×100mm	410×270×100mm
Net. Weight:	3Kg	4.5Kg	4.0kg