

Contents

05	Water Quality Analyzer Series	
	Desktop High-precision Water Quality Analyzer	05
	Multiple & Portable Water Quality Analyzer	09
	16 Vials Reactor	11
	Portable 4 Vials Reactor	12
13	Portable detection series	
	Multi-parameter Water Quality Analyzer	13
	Portable Water Quality Total Suspended Solids Turbidity Analyzer	17
	Portable Water Quality Analyzer	19
	Intelligent BOD Detector	21
	Portable Water Quality Dissolved Oxygen Meter	23
	Portable Fluorescent Dissolved Oxygen Meter	25
	Pentype Dissolved Oxygen Meter	27
	Portable Digital pH Meter	29
	Pentype pH Meter	31
	Pentype ORP Meter	33
	Portable pH/ORP Meter	35
	Desktop Water Quality pH Meter	37
	Pentype EC Meter	39
	Portable Electrical Conductivity Tester	41
	Conductivity/TDS/Salinity Desktop Water Quality Meter	43
	Multifunctional pentype water quality tester	45
	Pentype Digital Salinity Meter	46
47	Online water quality monitoring series	
	Online Universal Controller	47
	Online Multi-parameter Intelligent Controller	51
	Digital pH Sensor	55
	Intelligent Conductivity Sensor	56
	Intelligent ORP Sensor	57
	Online Fluorescence Dissolved Oxygen Sensor	58
	Intelligent Dissolved Oxygen Sensor	59
	Constant Pressure Residual Chlorine Detection Module	60
	Online Intelligent Turbidity Sensor	61
	Online Intelligent Suspended Solids Sensor	62
	Online Intelligent Uv254 COD Sensor	63
64	Optical Instrument Series	
	Digital Brix/Salinity Refractometer	64
65	Rapid Detection Series	
	Rapid Detection Test Strips	65
	Rapid Detection Test Kit	67
	Rapid Detection Colorimetric Tube	68

Desktop High-precision Water Quality Analyzer

LH-T725



Introduction

LH-T725 uses high-precision LED light source and advanced optical structure, adoption an intelligent detection system, Hundreds of data collections per second, and filtering algorithms to eliminate interference, improve data accuracy. The 7-inch IPS large touch screen makes the measurement results intuitive and clear. The helpful assistant for scientific research, data analysis, and water quality testing.

Detail



Feature



The light source advantage



Operational intelligence



Operation safety



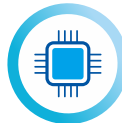
Low using cost



Data transmission



Quick Print



Powerful data management



Professional Testing

Application



Plant sewage



Water treatment plant



scientific research institutes



Sewage treatment



Surface water



Educational research

Technical Data

Measuring Items	COD	Ammonia Nitrogen	Total Phosphorus	Total Nitrogen
Detection method	Potassium dichromate method Potassium permanganate method	Salicylic acid method Nessler's reagent method	Ammonium molybdate method	Thymol method
Measuring Range	10-15000mg/L	0.02-100mg/L	0.02-20mg/L	0.5-500mg/L
Measuring Minimum	10mg/L	0.02mg/L	0.02mg/L	0.5mg/L
Digestion Temperature	165°C,20min	N/A	150°C,15min	125°C,30min
Indication Error	≤±5% or ±4mg/L	≤±5% or ±0.1mg/L	≤±5% or ±0.04mg/L	≤±5% or ±0.4mg/L
Repeatability	≤3%	≤3%	≤3%	≤3%

Technical Parameter

Indication Error	≤±5%
Repeatability	3%
Absorbance Detection range	0-3.5Abs
Optical path Stability	≤±0.002Abs/30min
Absorbance Resolution	0.001Abs
Operation Repeatability	≤±0.005Abs
Light Source Life	100,000 hours
FilterLife	5 years
Size	412mm×253mm×164mm
Weight	3.25Kg
Power	DC 12V/5A
Operating conditions	Humidity:0-50°C Relative humidity:0-90%(non-condensing)
Data storage	10000 pcs

Test Item

Number	Test Item	Measuring range (mg/L)	Detection lower limit (mg/L)
1	COD	10-15000	10
2	Ammonia Nitrogen	0.02-100	0.02
3	Total Phosphorus	0.02-20	0.02
4	Total Nitrogen	0.5-500	0.5
5	Permanganate	0.5-25	0.5
6	Hexavalent chromium	0.01-3	0.01
7	Total chromium	0.01-3	0.01
8	Nickel	0.02-5	0.02
9	Total nickel	0.025-5	0.025
10	Zinc	0.02-5	0.02
11	Total zinc	0.02-5	0.02
12	Copper	0.01-2	0.01
13	Total copper	0.01-2	0.01
14	Ferrous	0.01-3	0.01
15	Total iron	0.01-3	0.01
16	Manganese	0.1-20	0.1
17	Total manganese	0.1-20	0.1
18	Cadmium	0.02-1	0.02
19	Total cadmium	0.02-1	0.02
20	Aluminum	0.005-0.5	0.005
21	Silicon	0.01-100	0.01
22	Chloride	3-500	3
23	Cyanide	0.005-0.5	0.005
24	Fluoride	0.02-2	0.02
25	Sulfide	0.005-1	0.005
26	Volatile	0.05-5	0.05
27	Nitrite	0.005-0.3	0.005
28	Nitrate	0.25-40	0.25
29	Phosphate	0.005-2	0.005
30	pH	6.5-9	/
31	Oxygen	0.2-20	0.2
32	Residual chlorine	0.02-12	0.02
33	Total chlorine	0.02-12	0.02
34	Chlorine dioxide	0.02-5	0.02
35	Total hardness	0.1-500	0.1
36	Total alkalinity	1-3000	1
37	Ozone	0.02-2.5	0.02
38	Urea	0.1-20	0.1
39	Cyanuric acid	5-160	5
40	Aniline	0.005-2	0.005
41	Formaldehyde	0.01-1.5	0.01

Multiple & Portable Water Quality Analyzer

LH-C660

Introduction

The Multiple & Portable Water Quality Analyzer adopts the spectrophotometry to measure the COD, ammonia nitrogen, total phosphorus and total nitrogen concentration in the water.



Indicators comprehensive

Measure COD, ammonia nitrogen, total phosphorus, total nitrogen and other parameters, read the concentration directly.



Data transmission

Store data can be transmitted to computer by USB

Feature



High memory storage



Low using cost



Intelligent saving power



Easy to hold

Application



River and lake water quality monitoring



Laboratory researching and testing



The textile and printing and dyeing industry



Water treatment plant



Drinking water treatment plants



Sewage treatment plants

Technical Data

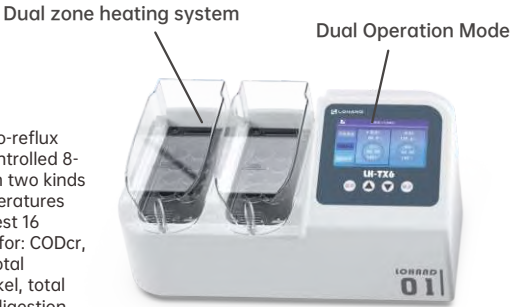
Test item	COD	Ammonia Nitrogen	Total Phosphorus	Total Nitrogen
Measuring range	10-15000mg/L	0.05-100mg/L	0.02-20mg/L	0.5-500mg/L
Wavelength	COD 420nm/620nm Ammonia nitrogen 420nm Total phosphorus 620nm Total nitrogen 420nm			
Indication error	≤±5%	≤±5%	≤±5%	≤±5%
Digestion temperature	165°C 20min	N/A	150°C 15min	125°C 30min
Light source	LED			
Operating conditions	Humidity:0-50% Relative humidity:0-80%(non-condensing)			
Battery life	Over 30 hours			
Size	90mmX70mmX125mm			
Weight	300g(battery included)			

16 Vials Reactor

LH-TX6

Introduction

The 16 vials reactor adopts the sealed micro-reflux method,dividing into two independently controlled 8-well templates, which can digest more than two kinds of indicators to be tested at different temperatures and times at the same time.Totally can digest 16 samples at the same time.Commonly used for: CODcr, CODmn, total phosphorus, total nitrogen, total chromium, total iron, total copper, total nickel, total zinc and other indicators of water sample digestion.



Feature



Smart digestion



Safe and reliable



Wide range parameter



Dual temperature and dual control

Technical Data

Technical Parameter	
Temperature control range	45~180°C
Digestion temperature	45~180°C
Temperature control accuracy	±0.1°C
Temperature tolerance	±0.5°C
Sample processing quantity	Can process 16 water samples simultaneously
Power supply	DC 24V/12.5A
Size	359x195x167mm
Weight	4kg

Portable 4 Vials Reactor

XC-200

Introduction

Portable 4 vials reactor adopts sealed micro flow digestion method , can digest four water samples at the same time,which is small and smart, easy to carry, affordable,stable quality.And it can be equipped with high-power batteries to realize field work without power supply.Commonly used for: CODcr, CODmn, total phosphorus, total nitrogen, total chromium, total iron, total copper, total nickel, total zinc and other indicators of water sample digestion.



Feature



Safe and reliable



Smart digestion



Wide range parameter

Technical Data

Technical Parameter	
Temperature control range	Room temperature~180°C
Digestion temperature	50~180°C
Temperature control accuracy	±0.1°C
Temperature tolerance	±1°C
Sample processing quantity	Can process 4 water samples simultaneously
Power supply	DC 12V/10A
Size	110X170X125mm
Weight	918g

Multi-parameter Water Quality Analyzer

LH-M900

Introduction

Multiple & portable water quality instrument LH-M900 adopts method of spectrophotometry, which supports the wavelengths of 420nm, 470nm, 520nm and 620nm, and can support multiple parameter detection. Many experiments shows that this method is simple, quick and sensitive. The instrument is small size, light and easy to carry, suitable for field and work field use. By adopting imported sensor, advanced optical system and expanding the measuring range of colorimeter, the time needed for sample dilution is saved. Test items can be freely matched according to customer requirements. The instrument has been used in various environmental protection bureau, factory waste water discharge detection, aquaculture, lake and bay detection, river regulation, laboratory scientific research detection field.

Feature



Waterproof-sealing



Large data storage



Light source advantage



Strong development practicality



Multiple power supply methods



Application



Chemical engineering



Water treatment plant



Water quality monitoring station

Technical Data

Model	Parameter
Absorbance detection range	0~3Abs
Optical path stability	≤±0.005Abs/30min
Absorbance resolution	0.001Abs
Enclosure protection class	IP65
The temperature	0~50℃
Size	170X72X44mm
Light life	100000 hours
Lens lifetime	5 years
Rated power	0.3 W
Operation repeatability	≤±0.01Abs
Humidity	N/A
Weight	277g

Test Item

Number	Test Item	Measuring range (mg/L)	Detection lower limit (mg/L)
Conventional 16 Parameters	Ammonia Nitrogen (Salicylic acid method)	0-2.5	0.02
		0-50	0.1
	Ammonia Nitrogen (Nessler)	0-5	0.02
		0-50	0.1
	Residual Chlorine	0-3	0.02
		0-12	0.4
	Total Chlorine	0-3	0.02
		0-12	0.2
	Ozone	0-2.5	0.01
	Chlorine Dioxide	0-5	0.02
	Sulfide	0-1	0.04
	Dissolved Oxygen	0-20	1
	Phosphate	0-2	0.01
	Nitrate	0-40	0.5
	Nitrite	0-0.3	0.003
	Urea	0-20	0.1
	Total Alkalinity	0-280	4
		0-2800	100
Medical and Swimming Pool 8 Parameters	Total Hardness	0-100	5
		0-500	50
	pH	6.5-9.0pH	/
	Cyanuric Acid	0-160	5
	Residual Chlorine	0-3	0.02
		0-12	0.1
	Total Chlorine	0-3	0.02
		0-12	0.1
	Ozone	0-2.5	0.01
	Chlorine Dioxide	0-5	0.02
	Urea	0-20	0.1
	Total Hardness	0-100	4
		0-500	100
	pH	6.5-9pH	/
	Cyanuric Acid	0-160	5

Test Item

Number	Test Item	Measuring range (mg/L)	Detection lower limit (mg/L)
Heavy Metal 12 Parameters	Total Copper	0-4	0.05
	Total Iron	0-5	0.05
	Total Zinc	0-2.5	0.05
	Total Manganese	0-9	0.01
	Total Nickel	0-5	0.05
	Total Cadmium	0-0.6	0.005
	Hexavalent Chromium	0-1	0.004
	Total Chromium	0-1	0.01
	Aniline	0-2	0.01
	Fluoride	0-2	0.03
	Volatile Phenol	0-2.5	0.05
	Cyanide	0-0.5	0.005
Residual Chlorine/ Total Chlorine Low Range	Residual Chlorine	0-3	0.02
	Total Chlorine	0-3	0.02
Residual Chlorine/ Total Chlorine High Range	Residual Chlorine	0-12	0.1
	Total Chlorine	0-12	0.1
Residual Chlorine/ Total Chlorine Full Range	Residual Chlorine	0-3	0.02
		0-12	0.1
	Total Chlorine	0-3	0.02
		0-12	0.1
Total Hardness/ Total Alkalinity/ Chloride	Total Alkalinity	0-280	5
		0-2800	50
	Total Hardness	0-100	4
		0-500	100
	Chloride	0-500	8
Ammonia Nitrogen (Nessler)/Ammonia Nitrogen (Salicylic Acid)/Phosphate Phosphate	Ammonia Nitrogen (Salicylic Acid Upgrade)	0-2.5	0.02
		0-50	0.4
	Ammonia Nitrogen (Nessler)	0-5	0.02
		0-50	0.2
	Phosphate	0-2	0.01

Portable Water Quality
Total Suspended Solids
Turbidity Analyzer

LH-Z10A/LH-XZ03

Introduction

The portable water quality total suspended solids turbidity test analyzer measures the scattered light principle in the direction of 90° according to the ISO 7072 standard. Combined with the scattered light method and the transmitted light method, an infrared light source is used to eliminate the noise and the measurement results are more accurate and reliable. The instrument has built-in dual detectors of 90° and 180°. The 90° detector receives scattered light and the 180° detector receives transmitted light. The intensity of the scattered light and the transmitted light is proportional to the turbidity in the sample to converted turbidity of the water sample.

Feature



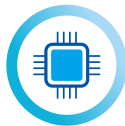
Double Light Test



Professional
Testing



Sealed
Waterproof



Strong Storage



Detail



Technical Data

Measurement Parameters	LH-Z10A(Turbidity)		LH-XZ03(TSS)	
Measuring Range	0-20NTU	0-1000NTU	0-1000mg/L	0-1000NTU
Accuracy	±0.1NTU or ±5%NTU	±0.3NTU or ±8%NTU	±0.3mg/L or ±8%NTU	±0.3NTU or ±8%NTU
Repeatability	±0.1NTU@<10NTU ≤±1%@≥10NTU	<10NTU, ≤±0.1NTU ≥10NTU, ≤±1%NTU	<10mg/L, ≤±0.1mg/L ≥10mg/L, ≤±1%NTU	<10NTU, ≤±0.1NTU ≥10NTU, ≤±1%NTU
Calibration Method	Calibration Up To 4 Points (Optional Calibration Solution)	Calibration Up To 8 Points(Optional Calibration Solution)	1 Point Calibration	Four points calibration (Up to 8 points calibration)
Zero Drift	≤±0.3%F.S/30minutes			
Operating Temperature	5-40°C			
Storage Temperature	-10-55°C			
Humidity	0-80%RH			
Power Supply	Lithium Battery			
Protection Grade	IP65			
Size	170X72X44mm			
Weight	290g			

Portable Water Quality Analyzer

Introduction

Brand-new model portable water quality analyzer, used for the concentration determination of residual chlorine, total chlorine, chlorine dioxide, ozone, ammonia nitrogen in water samples with simple and quick operation and high sensitivity. With lightweight, easy to carry, delicate and compact design, save space for you. It is suitable for site and field use in municipal water, medical water, public health, environmental monitoring and other industries, bring you a new working experience.



Feature



Pre-stored standard curve



Good optical stability



IP65 degree of protection



Economical and environmentally friendly



Intuitive operation

Detail



Application



Waterworks



Drinking Water



Environmental friendly



Swimming Pool Water

Technical Data

Model	LH-C10F	LH-C06F	LH-C03F	LH-D01F	LH-N11F	LH-P30F
Test Item	Residual Chlorine	Total Chlorine	Chlorine Dioxide	Ozone	Ammonia Nitrogen	Phosphate
Measure range	0.05 ~ 10mg/L	0.05 ~ 10mg/L	0.1 ~ 5mg/L	0.05 ~ 2.5mg/L	0.01 ~ 10mg/L	0.00 ~ 2mg/L
Wavelength	520nm	520nm	520nm	520nm	420nm	620nm
Principle	Reference to HJ 586-2010 National Environmental protection standard "Water Quality Determination of Free Chlorine and Total Chlorine N, N-diethyl-1, 4-phenylenediamine Spectrophotometric Method"		DPD photometric method, chlorine dioxide reacts with DPD reagent to make the sample solution appear red.	DPD photometric method, ozone reacts with DPD reagent to make the sample solution appear red.	Nessler's reagent photometry	Ammonium molybdate spectrophotometry
Accuracy	<1.0 mg/L, ≤±0.05mg/L; ≥1.0 mg/L, ≤±5%					
Light source	LED light emitting diode					
Battery life	More than 24 hours (without shutdown)					
Size	128×70×48mm					
Weight	188g (including battery)					

Intelligent BOD Detector

LH-TB100

Introduction

LH-TB100 series intelligent BOD detector simulates the a biological degradation process of organic matter in nature, according to the national standard (HJ505-2009) five days of biochemical oxygen demand (BOD5) determination, the principle of mercury free differential pressure sensing method is designed. The method is simple, accurate measurement, experiment process is safe and effective, BOD measurement range is wide, intelligent instrument operation, automatic testing and data storage, data can be uploaded to the wireless computer, wireless connection printer print data, the experimental process without modes, applicable to the monitoring station, the third party inspection institutions, colleges and universities, industry pollution enterprises, etc.



Application



Sewage treatment plants



sewage enterprises



hospital waste water



chemical pharmaceutical



scientific research institutes



river basin surface water

Feature



Direct reading of concentration



Independent determination



Wide detection range



Wireless transmission



Data recording

Technical Data

Project	LH-TB100 standard model	LH-TB100 High-end models
Test range	0-4000mg/L	0-4000mg/L
Resolution	0.01mg/L	0.01mg/L
Accuracy	±8%	±8%
Quantity of samples	1-6	1-6
Test result storage	10 years of data	10 years of data
Detailed data storage	1 set	3 set
Test period	1~7 days	1~30 days
Sampling points	60	30~960
Direct reading of concentration data	✓	✓
Smart mixing	✓	✓
Dilution concentration direct reading	×	✓
Display data curve	×	✓
Upload data wireless	×	✓
Print data wireless	×	✓
Test principle	Mercury-free differential pressure sensing method	
Culture temperature	20±1℃	
power supply	AC220V±10%/50-60HZ	
Rated power	10W	
Size	270mm×185mm×75mm	
Host weight	2.4kg	

Portable Water Quality Dissolved Oxygen Meter

LH-D701

Introduction

LH-D701 is an intelligent analytical instrument that can be used to measure dissolved oxygen in water bodies for water source monitoring, aquaculture, sewage treatment plants and scientific research units. The instrument has a novel appearance and is easy to carry. It is suitable for spot and field operation.



Feature



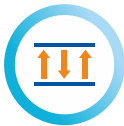
Portable & Widescreen



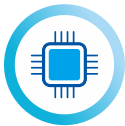
High Detection Accuracy



Sealed And Waterproof



Sensor Light Switch



Strong Storage



Power Management Function

Technical Data

Item	Dissolved Oxygen Concentration	Dissolved Oxygen Saturation	Temperature
Measuring Range	0~20mg/L	0~200%	0~60℃;32~140℉
Resolution	0.01mg/L	0.1%	0.1℃;0.1℉
Accuracy	≤±0.30mg/L	≤±3.0%	≤±0.3℃
Atmospheric Pressure Compensation	Manual Compensation (60~110)KPa		
Salinity Compensation	Manual Compensation (0~50)g/L		
Temperature Compensation	Automatic Compensation (0~40)℃;(32~104)℉		
Standard Electrode	Sd02 Type Dissolved Oxygen Electrode, 3 Meters Length Cable		
Response Time	≤45S		
Power Supply	Lithium Battery		
Environmental Protection Level	IP65		
Dimensions	165x75x51mm		

Temperature	Dissolved Oxygen mg/L	Temperature	Dissolved Oxygen mg/L	Temperature	Dissolved Oxygen mg/L	Temperature	Dissolved Oxygen mg/L
0	14.62	1	14.22	2	13.83	3	13.46
4	13.11	5	12.77	6	12.45	7	12.14
8	11.84	9	11.56	10	11.29	11	11.03
12	10.78	13	10.54	14	10.31	15	10.08
16	9.87	17	9.67	18	9.47	19	9.28
20	9.09	21	8.92	22	8.74	23	8.58
24	8.42	25	8.26	26	8.11	27	7.97
28	7.83	29	7.69	30	7.56	31	7.43
32	7.31	33	7.18	34	7.07	35	6.95
36	6.84	37	6.73	38	6.62	39	6.52

Portable Fluorescent Dissolved Oxygen Meter

LH-D702

Introduction

Fluorescent Dissolved Oxygen Analyzer is an hand-held intelligent optical analyzer, which is widely used in continuous monitoring of dissolved oxygen, saturation and temperature in solutions such as environmental protection, biochemical, food and tap water.



Feature



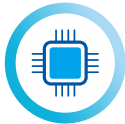
Result Smart Lock



Smart alarm



Circuit protection



Data storage



Waterproof IP67



Dual power supply



Salinity/Air pressure compensation



Backlight display function



Chinese & English

Detail



Application



Environmental monitoring



Sewage treatment



Educational research



Aquaculture

Technical Data

Meter Specifications	
Screen	3.3-inch monochrome LCD screen
Dimensions	200mm*101mm*36mm
Weight	420g
Data storage	support
language	Chinese/ English
Air pressure measurement	50 ~ 115kPa
waterproof	IP67
power supply	4*AA batteries
Relative humidity	10 ~ 85%RH(no condensation)
Working temperature	-10 ~ 60°C
Transportation and storage conditions	Temperature: -15 ~ 65°C; Relative humidity: 5 ~ 85%RH(no condensation)

Sensor Specifications	
Measurement principle	Fluorescence
Measuring range	Dissolved oxygen: 0 ~ 20mg/L; Saturation: 0 ~ 200%; Temperature: 0 ~ 50°C
Calibration	One or two point calibration

Pentype Dissolved Oxygen Meter

LH-D300J

Introduction

LH-D300J pentype dissolved oxygen meter, a product specially designed to test the dissolved oxygen, fast response, reliable measurement, delicate and small design concept, clear and easy to read data interface, excellent anti-interference performance, combined with high brightness backlight lighting, can complete one hand measurement operation, can meet your different measurement needs.



Feature



Automatically lock the reading



Lightweight and easy to carry



Multiline energy storage backlight screen



IP65 protection



Automatic temperature compensation

Application



Waterworks



Aquaculture



Plant sewage



Environmental friendly



Educational research



Sewage disposal

Technical Data

Item	Instrument electronic unit parameters
Model	LH-D300J
Measuring range	0-20mg/L; 0-200%
Resolution ratio	0.01mg/L; 0.1%
Measurement accuracy	0.05mg/L; 0.5%
Temperature measurement range	0-100°C/32-212°F
Operation temperature range	0-60°C/32-140°F
Automatic temperature compensation	0-60°C
Temperature resolution	0.1°C/1°F
Temperature accuracy	0.2°C(0-60°C)
Calibration	1 point/2 point (0% anaerobic / 100% saturated oxygen)
Salinity compensation	0-40g/L
Atmospheric pressure compensation	700-1400mbar
Display screen	20*30mm multi line liquid crystal display
protection level	IP65
Auto backlight	1 minute
Auto shut off	20 minutes
Electric source	1×1.5V AAA
Size	185×40×48mm
Weight	95g

Portable Digital pH Meter

LH-P210

Introduction

This instrument is an intelligent analytical instrument, suitable for petroleum, chemical, pharmaceutical, power plant, environmental protection, universities and scientific research institutions and other units. It can not only measure the pH value in the aqueous solution, but also measure the electrode potential and temperature of the solution. The instrument is novel in appearance and easy to carry, suitable for on-site and field operations.



Feature



Protection Grade IP65



Low Power Design



3 Buffer Reagents



Power Management Function



Widescreen Display



Automatic Temperature Compensation



Technical Data

Item	pH	mV	Temperature
Measuring Range	(0~14)pH	(-1999.9~1999.9)mV	(0~80.0)°C; (32~176)°F
Resolution	0.01pH	0.1mV	0.1°C; 0.1°F
Accuracy	≤±0.02pH	≤±0.1%F.S	≤±0.5°C
pH Temperature Automatic Compensation Range	0~60°C (32~140°F)		
Protection Grade	IP65		
Power Supply	Lithium Polymer Battery		
Dimensions	165X75X51mm		
Weight	270g		

Pentype pH Meter

LH-P300

Introduction

The LH-P300 pH pen adopts a flat-head electrode and supports automatic temperature compensation. It is suitable for the pH measurement of flat materials and a small amount of samples.Exquisite and compact design concept, clear and easy-to-read data interface, excellent anti-interference performance, combined with high-brightness backlighting, the measurement operation can be completed with one hand, which can meet your different measurement needs and experience the fun of testing.



Feature



Multiline energy storage back-light screen



Automatically lock test value



Platinum round plane electrode



IP65 protection



Electrode self diagnosis

Application



Cosmetic



Food and drink



Skin detection



Environmental friendly



Educational research



Paper printing

Technical Data

Project	Instrument electronic unit parameters		Instrument complete set of measurement parameters
pH range	0-14pH		
pH resolution	0.01pH		
pH accuracy	±0.01pH		±0.1pH
Temperature measurement range	0-100°C/32-212°F		
Operation temperature range	0-60°C/32-140°F		
Temperature resolution	0.1°C/1°F		
Temperature accuracy	±0.2°C(0°C-60°C)		±0.5°C(0°C-60°C)
Calibration pH standard solution	Automatic recognition of 3-point standard solution calibration		
	USA: 4.01,7.00,10.01		
	NIST: 4.01,6.86,9.18		
pH electrode	High impedance planar electrode		
Temperature compensation	NTC22K automatic temperature compensation		
Lock function	Manual / Auto		
Screen	20*30mm multiline LCD backlit display		
Protection level	IP65		
Automatic backlight	1 minute		
Automatic shut-down	20 minute		
Power	1*1.5V AAA battery		
Size	185*40*48mm		
Weight	95g		

Pentype ORP Meter

LH-M300

Introduction

LH-M300 ORP Pen is a specially designed for testing redox potential. Adopting platinum circular plane electrode, with fast response, accurate and reliable measurement, exquisite and compact design concept, clear and easy to read data interface, excellent anti-interference performance, combined with high brightness backlight lighting, it can complete the measurement operation with one hand, which can meet different measurement needs, test and track the millivolt value of the measured object anytime and anywhere.



Feature



Platinum round plane electrode



Automatic value lock



Multi-line energy storage backlight screen



IP65 protection



Electrode self diagnosis

Application



Waterworks



Aquaculture



Food and beverage



Environmental friendly

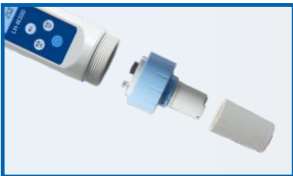


Educational research



Swimming pool

Detail



Technical Data

Item	Instrument electronic unit parameters		Complete set of instrument measurement parameters
ORP	-1000~+1000mV		
ORP resolution	1mV		
ORP measurement accuracy	±1mV		±5%F.S
Temperature measurement range	0-100°C/32-212°F		
Operation temperature range	0-60°C/32-140°F		
Temperature resolution	0.1°C/1°F		±0.5°C
Calibration	1 point(Calibration at any point in the full scale range)		
ORP electrode	Replaceable platinum round plane electrode		
Screen	20*30mm Multi line LCD backlight display		
Protection level	IP65		
Auto backlight	1 minute		
Auto shutdown	20 minutes		
Power supply	1*1.5V AAA Battery		
Size	185*40*48mm		
Weight	95g		

Portable pH/ORP Meter

LH-P500

Introduction

Exquisite and compact design concept saves space for you, clear and easy-to-read data interface, excellent anti-interference performance, calibrated point display, accurate measurement, convenient operation, combined with high-brightness backlighting, it is your professional test tool and a reliable instrument for daily measurement in laboratories and schools.



Feature



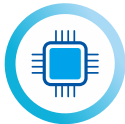
Large LCD
backlight
display



Temperature
offset
adjustment



3-point
automatic
calibration



Multiple sets
of measure-
ment data



HOLD auto lock

Application



Biotechnology



Food and drink



Cosmetic



Environmental friendly



Educational research



Chemical pharmaceutical

Detail



Technical Data

Project		Specifications
pH	Measuring range	0~14pH
	Resolution	0.01pH
	Indication error	±0.02pH
Redox	Measuring range	-2000~2000mV
	Resolution	1mV
	Indication error	±0.2%F.S
Temperature	Measuring range	-10.0°C~110.0°C
	Resolution	0.1°C
	Indication error	±0.2°C
Power	Power supply	2 AAA batteries
	Battery Life	More than 500 hours
Buffer	First group(NIST)	4.00, 6.86, 9.18
	Second Group(USA)	4.01, 7.00, 10.01
Other	Use environment	-5°C~60°C; Relative humidity<90%
	Data storage	256 sets of values
Size	210×95×35mm	

Desktop Water
Quality pH Meter
LH-P800

Introduction

The exquisite and compact design concept, save space for you. It will bring user a new use experience. Clear and easy-to-read data interface, excellent anti-interference performance, calibrated point display, accurate measurement, convenient operation, combined with high-brightness backlighting, is your professional test tool, is a reliable instrument for daily measurement in laboratories and schools.



Feature



Large LCD
backlight display



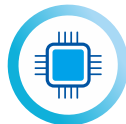
Automatically
lock test value



5-point automatic
calibration



IP65 protection



Powerful data
management

Application



Biotechnology



Food and drink



Cosmetic



Environmental friendly



Educational research



Chemical pharmaceutical

Detail



Technical Data

Project		Specifications
pH	Measuring range	-2~16pH
	Resolution	0.01pH
	Indication error	-2000~2000mV
ORP	Measuring range	-2000~2000mV
	Resolution	1mV
	Indication error	±0.2%F.S
Temperature	Measuring range	-10℃
	Resolution	0.1℃
	Indication error	±0.2℃
Power supply	Power supply	4 AAA batteries or transformer 100~220V
	Battery Life	More than 500 hours
Calibration	First group	1.68, 4.00, 6.86, 9.18, 12.46
	Second Group	1.68, 4.00, 7.00, 10.01, 12.46
Other	Use environment	-5℃~60℃; Relative humidity <90%
	Data storage	256 sets of measurement value storage function
Size	150*200*60mm (W*L*H)	
Weight	650g	

Pentype EC Meter

LH-N300

Introduction

LH-N300 EC Pen, a LH-N300 conductivity test pen is equivalent to a conductivity test pen, a TDS pen-type test and a salinity test pen. The electrode adopts anti foaming design, accurate and stable anti-interference, exquisite and compact design concept, clear and readable data interface, excellent anti-interference performance, combined with high brightness backlight lighting, the measurement can be completed with one hand, Its immersion design makes the field test more flexible and convenient, and can meet different measurement needs.



Feature



Anti bubble electrode



Automatically lock test value



Multi row energy storage backlight screen



IP65 protection



Electrode self diagnosis

Application



Waterworks



Aquaculture



Sewage disposal



Environmental friendly



Educational research



Boiler water

Technical Data

Item	Instrument electronic unit parameters	Complete set of instrument measurement parameters
Measuring range	0μS/cm(ppm)-20mS/cm(ppt)	
Resolution	0.1μS/cm(ppm)-0.01mS/cm(ppt)	
Measurement accuracy	±2%F.S	±3%F.S(After calibration)
Temperature measurement range	0-100°C/32-212°F	
Operation temperature range	0-60°C/32-140°F	
Temperature compensation range	0-60°C	
Temperature compensation	Auto / Manual	
Temperature coefficient	0-10% Adjustable(Ex factory 2%)	
Reference temperature	15-30°C(Adjustable Ex factory 25°C)	
Calibration mode	Automatic range 1-point calibration	
TDS measurement range	0mg/L (ppm)-20g/L(ppt)	
TDS coefficient	0.4-1Adjustable (Ex factory:0.50)	
Salinity measurement range	0mg/L (ppm)-13g/L (ppt)	
Salinity coefficient	0.60	
Conductive electrode	Φ13mm,K=1	
Screen	20*30mm Multiline LCD backlight display	
Protection level	IP65	
Auto backlight	1 minute	
Auto shutdown	20 minutes	
Power supply	1×1.5V AAA Battery	
Size	185*40*48mm	
Weight	95g	

Portable Electrical Conductivity Tester

LH-N500

Introduction

The exquisite and compact design concept, save space for you. Clear and easy-to-read data interface, excellent anti-interference performance, calibrated point display, accurate measurement, convenient operation, combined with high-brightness backlighting, is your professional test tool, is a reliable instrument for daily measurement in laboratories and schools.



Feature



Lightweight and easy to carry



Temperature offset adjustment



Automatic range switching



Multiple sets of measurement data



HOLD auto lock

Application



Biotechnology



Food and beverage



Sewage disposal



Environmental friendly



Educational research



Chemical pharmaceutical

Detail



Technical Data

Project		Specifications
Measurement range	Measurement range	0~400mS/cm
	Resolution	0.001μS/cm~0.1mS/cm
	Indication error	±0.5%F.S
TDS	Measurement range	0ppm~200ppt (Conversion factor 0.5)
	Resolution	0.001mg/L~0.1g/L
	Indication error	±0.5%F.S
Salinity	Measurement range	0~260.0g/L
	Resolution ratio	0.1g/L
	Measurement accuracy	±0.5%F.S
	SAL coefficient	0.6
Temperature	Measurement range	-10℃~110℃
	Resolution	0.1℃
	Indication error	±0.2℃
Power supply	Electric supply	2 AAA batteries
	Battery life	> 500 hours
Other	Use environment	-5℃~60℃; Relative humidity < 90%
	Data storage	256 groups of data

Conductivity/TDS/Salinity Desktop Water Quality Meter

LH-N800

Introduction

The LH-N800 benchtop water quality analyzer, exquisite and compact design concept, save you the space. It will bring user a new use experience. Clear and easy-to-read data interface, excellent anti-interference performance, calibrated point display, accurate measurement, convenient operation, combined with high-brightness backlighting, is your professional test tool, a reliable instrument for daily measurement in laboratories and schools.



Feature



Large LCD back-light display



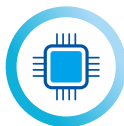
Automatically lock test value



Automatic range switching



IP65 protection



Powerful data management

Application



Biotechnology



Cosmetic



Food and drink



Environmental friendly



Educational research



Chemical pharmaceutical

Detail



Technical Data

Project		Specifications
Conductivity	Measuring range	0~400mS/cm
	Resolution	0.001μS/cm~0.1 mS/cm
	Indication error	±0.5%F.S
TDS	Measuring range	0ppm~200ppt (Conversion factor 0.5)
	Resolution	0.001mg/L~0.1g/L
	Indication error	±0.5%F.S
Salinity	Measuring range	-10℃
	Resolution	0.1℃
	Measurement accuracy	±0.2℃
	SAL coefficient	0.6
Temperature	Measuring range	4 AAA batteries or transformer 100~220V
	Resolution	More than 500 hours
	Indication error	±0.2℃
Power	Power supply	4 AAA batteries or transformer 100~220V
	Battery life	More than 500 hours
Other	Use environment	-5℃~60℃; Relative humidity<90%
	Data storage	256 sets of values
Size	150*200*60mm (W*L*H)	
Weight	650g	

Multifunctional pentype water quality tester


LH-TDS9

Introduction

The multifunctional water quality detection pen detect the TDS value (total dissolved solids, unit is ppm) and conductivity value (the conductivity of the solution, the unit is us/cm) of water, judge the purity of the water, with the function of water temperature and environment temperature. This product detect the water quality testing in the water treatment industry, homes, and outdoor places.

Feature


- 

Pure titanium probe
- 


Fast response
- 

Multi-function test
- 

Easy to carry
- 

Easy operation
- 

Environment friendly
- 

Accurate measurement
- 

Metal temperature compensation

Technical Data

Project	Specifications
TDS range	0~9999ppm
Conductivity range	0~9999μS/cm
Temperature range	0-80℃ 32~176℃
Resolution	1ppm 1μS/cm
Measurement accuracy	±2%F.S
Battery Specification	1.5V*2 (AG13 button battery)
Operating current	<1mA
Product weight	26.5g
Product size	164x25x16mm

Pentype Digital Salinity Meter

LH-SA10

Introduction

This pentype digital salinity meter is the portable intelligent analyzer, widely used for continuous monitoring of salinity content in solutions for domestic water, home kitchen, food processing and aquaculture etc.

Feature

- 

Waterproof
- 

Smart lock
- 

Vibration alert
- 

Quick response
- 

Durable
- 

Easy operation
- 

Platinum electrodes
- 

Accurate measurement
- 

Green energy efficiency

Technical Data

Specifications	
Measuring Range	0 ~ 10‰
Measuring temperature range	0 ~ 99 °C
Resolution	0.01‰, 0.1℃
Accuracy	(0 ~ 1.99) %±0.1% ; (2 ~ 4.99) %±0.2% ; (5 ~ 10) %±0.5%
Battery	2*AAA
Size	164x25x16 mm
Weight	47g

Online Universal Controller

LH-D6901

Introduction

This instrument is an intelligent online controller, which is widely used in water quality detection in sewage plants, waterworks, water stations, surface water and other fields, as well as electronic, electroplating, printing and dyeing, chemistry, food, pharmaceutical and other process fields, meet the needs of water quality detection; Adopting digital and modular design, different functions are completed by various unique modules. Built-in more than 20 kinds of sensors, which can be combined at will, and reserved powerful expansion functions.



Feature



High definition color touch screen



Strong expansibility and practicability



Multiple output modes



IP65 waterproof



High and low alarm



Chinese and English interface



Remote communication



History record



Customization services

Application



Aquaculture



Sewage treatment



Waterworks



Environmental monitoring



Plant sewage



Surface water

Technical Data

Project	Specifications
Working voltage	AC 90~220V、50/60Hz
Instrument size	100*100*150mm
Hole size	93*93mm
Weight	0.56Kg
IP grade	IP65

Electrode parameters				
LH-DO59 Dissolved Oxygen Intelligent Sensor	Measuring range	0~20mg/L		
	Resolution	0.01 mg/L		
	Accuracy	±5%		
LH-N100 Ammonia Nitrogen Intelligent Sensor	Measuring range	0~100mg/L (pH : 4~10)		
	Resolution	0.1mg/L		
	Accuracy	±5%F.S or ±3mg/L take greater as standard		
LH-DE21 Conductivity Intelligent Sensor	Measuring range	K=0.1 electrode: 0.2-200μs/cm K=1 electrode: 2-2000μs/cm K=10 electrode: 20μs/cm ~ 20ms/cm		
	Resolution	0.01μs/cm		
	Accuracy	±2%F.S		
LH-DpH07 pH Intelligent Sensor	Measuring range	0~14pH		
	Resolution	0.01pH		
	Accuracy	≤±0.02pH		
LH-DY06 Fluorescence Dissolved Oxygen Intelligent Sensor	Measuring range	0~20mg/L or 0~200% saturation		
	Resolution	0.01 mg/L		
	Accuracy	±0.3mg/L or ±5%		
LH-DR31 OPR Intelligent Sensor	Measuring range	-2000~2000mV		
	Resolution	1mV		
	Accuracy	±15%		
LH-T615 Chlorophyll Intelligent Sensor	Measuring range	0~400μg/L or 0~100RFU		
	Resolution	0.1μg/L or 0.1%RFU		
	Accuracy	±5%		
LH-T613 Blue-Green Algae Intelligent Sensor	Measuring range	0-200, 000 cells/mL		
	Resolution	1 cells/mL		
	Accuracy	±5%		
LH-DZ09 Turbidity Intelligent Sensor	Measuring range	0-20/ 0-200NTU	0-1000NTU	0-3000NTU
	Resolution	0.01、1NTU	0.1、1NTU	
	Accuracy	≤5NTU accuracy, ≤±0.3NTU; >5NTU accuracy, ≤±6%	≤10NTU accuracy, ≤±0.5NTU; >10NTU accuracy, ≤±8%	

Electrode parameters				
LH-DX01 Online water quality Suspended solids electrode	Measuring range	0-200mg/L	0-1000mg/L	0-3000mg/L
	Resolution	0.01、1mg/L	0.1、1mg/L	
	Accuracy	≤±0.3mg/L or ≤±6%	≤±0.5mg/L or ≤±8%	
LH-E900 Chlorine Dioxide Intelligent Sensor	Test Item	Chlorine Dioxide	Temperature	
	Measuring range	0~20mg/L	-10~110℃	
	Resolution	0.01mg/L	0.1℃	
	Accuracy	±0.1 mg/L	±0.5℃	
LH-F900 Residual Chlorine Intelligent Sensor	Test Item	Residual Chlorine	Temperature	
	Measuring range	0~20mg/L	-10~110℃	
	Resolution	0.01 mg/L	0.1℃	
	Accuracy	±0.1mg/L	±0.5℃	
LH-DC18 COD Intelligent Sensor	COD	Measuring range	0~600 mg/L equiv.KHP	
		Resolution	0.1mg/L	
		Accuracy	±5%F.S	
	Turbidity	Measuring range	0~300NTU	
		Resolution	0.1NTU	
		Accuracy	±5%F.S	
LH-NO3 Nitrate Intelligent Sensor	Nitrate	Measuring range	0.1~14000ppm(or mg/L)	
		Resolution	0.01	
		Accuracy	Measuring standard solution±5%	
	pH	Measuring range	2.5~11pH	
		Measuring range	0~50℃	
		Resolution	0.1℃	
LH-DZ900 Ozone Intelligent Sensor	Ozone	Measuring range	0~20 mg/L	
		Resolution	0.01 mg/L	
		Accuracy	5%F.S	
	Temperature	Measuring range	-10~110℃	
		Resolution	0.1℃	
		Accuracy	±0.5℃	

Online Multi-parameter Intelligent Controller

LH-D6900

Introduction

This instrument is an intelligent online controller, which can select matching sensors to detect various parameters according to different customer needs, such as detection of dissolved oxygen, conductivity/salinity, suspended solids and other parameters. It is widely used in agriculture, aquaculture, and industrial wastewater. environmental protection and other fields with different needs.



Feature



HD color touch screen



Strong practicability for expansion



Multiple output modes



IP65 waterproof



High and low alarm



Chinese/English interface



Remote communication



History record



Customized service

Application



Aquaculture



Sewage treatment



Waterworks



Environmental monitoring



Industrial sewage



Agriculture

Technical Data

Specification	
Working voltage	AC 90~220V、50/60Hz
Maximum power consumption	36W
IP grade	IP65
Connection interface	12V output, RS485 communication
Data output	RS485 (standard), Wireless transmission (standard) 4-20mA (optional), relay output (optional)
Installation method	Wall-mounted
Size	266*173*75mm
Weight	1.04kg

Electrode parameters				
LH-DC18 UV254Online COD Sensor	Measuring range	0~600mg/L equiv.KHP		
	Resolution	0.1mg/L		
	Accuracy	±5%F.S		
LH-DL05 Industrial Online Residual Chlorine Sensor	Measuring range	0~20mg/L		
	Resolution	0.01mg/L		
LH-DL06 Constant Pressure Residual Chlorine Digital Module	Accuracy	① pH < 7.2: ±0.03mg/L or 3% (whichever is greater) ② When 7.2<pH < 8.5: ±10%; ③ When 8.5<pH < 9: ±20%		
	Measuring range	0~3mg/L		
	Resolution	0.1mg/L		
LH-DY06 Online Fluorescent Dissolved Oxygen Sensor	Accuracy	① 0.01~0.2mg/L:±0.02mg/L; ② 0.21~3mg/L:±0.1mg/L or 5%, whichever is greater		
	Measuring range	0~20mg/L or 0~200% saturation		
	Resolution	0.01mg/L		
LH-DY12 Online Fluorescent Dissolved Oxygen Sensor	Accuracy	±0.3mg/L or ±5%		
	Measuring range	0~25mg/L		
	Resolution	0.01mg/L		
LH-DZ09 Online Water Quality Turbidity Sensor	Accuracy	±0.1mg/L or ±2%		
	Measuring range	0-20NTU	0-200NTU	0-1000NTU 0-3000NTU
	Resolution	0.01、1NTU		0.1、1NTU
LH-DX01 Online Total Suspended Solids Sensor	Accuracy	≤5NTU, accuracy ≤±0.3NTU; >5NTU, ≤accuracy ±6%		≤10NTU, accuracy ≤±0.5NTU; >10NTU, accuracy ≤±8%
	Measuring range	0-200mg/L		0-1000mg/L 0-3000mg/L
	Resolution	0.01mg/L		0.1mg/L
LH-DPh07 Digital PH Sensor	Accuracy	≤±0.3mg/L or ≤±6%		≤±0.5mg/L or ≤±8%
	Measuring range	0~14pH		
	Resolution	0.01pH		
LH-DR31 Digital ORP Sensor	Accuracy	≤±0.02pH		
	Measuring range	-2000~2000mV		
	Resolution	1mV		
LH-DE03/LH-DE21 Digital Conductivity Sensor	Accuracy	±15%		
	Measuring range	K=0.1 electrode: 0.2~200μS/cm K=1 electrode: 2~2000μS/cm		
	Resolution	0.01μS/cm		
LH-DO59 Digital Dissolved Oxygen Sensor	Accuracy	±2%F.S		
	Measuring range	0~20mg/L		
	Resolution	0.01mg/L		
	Accuracy	±5%		

Electrode parameters		
LH-E900 Digital Chlorine Dioxide Sensor	Measuring range	0~20mg/L
	Resolution	0.01mg/L
	Accuracy	±0.1 mg/L
LH-S900 Digital Salinity Sensor	Measuring range	0~13000mg/L
	Resolution	0.1mg/L
	Accuracy	±2%F.S
LH-DZ900 Digital Ozone Sensor	Measuring range	0~20mg/L
	Resolution	0.01 mg/L
	Accuracy	5%F.S
LH-L100 Digital Chloride Ion Sensor	Measuring range	0~10000mg/L
	Resolution	1 mg/L
	Accuracy	±5%F.S
LH-L200 Digital Fluoride Ion Sensor	Measuring range	0-10000mg/L
	Resolution	1 mg/L
	Accuracy	±5%F.S
LH-L300 Digital Sludge Concentration Sensor	Measuring range	0~20g/L
	Resolution	0.01g/L
	Accuracy	±1%F.S
LH-L400 Digital Water Hardness Sensor	Measuring range	0~10000mg/L
	Resolution	1 mg/L
	Accuracy	±5%F.S
LH-NO3 Smart Nitrate Ion Sensor	Measuring range	0.1~14000ppm (or mg/L)
	Resolution	0.01
	Accuracy	Standard solution ±5% F.S
LH-T613 Online Self-cleaning Blue-green Algae Sensor	Measuring range	0~200, 000 cells/mL
	Resolution	1 cells/mL
	Accuracy	±5%
LH-T615 Online self-cleaning Chlorophyll Sensor	Measuring range	0~400μg/L or 0~100RFU
	Resolution	0.1μg/L or 0.1%RFU
	Accuracy	±5%
LH-T616 Self-cleaning Oil in Water Sensor	Measuring range	0~200mg/L
	Resolution	0.01mg/L
	Accuracy	±3%F.S
LH-T660 Online Sensor Method NH4-N Ammonia Nitrogen Sensor	Measuring range	0~100mg/L
	Resolution	0.01mg/L
	Accuracy	±10% of measured value or ±0.5mg/l whichever is greater, depending on calibration

Digital pH Sensor

LH-DpH07



Product Introduction

This digital sensor integrates electronic circuits and microprocessors inside the sensor. It is suitable for the real-time pH value monitoring in industrial wastewater, water works, food processing, biological pharmaceutical and other industries.

Features

- Sensor has good repeatability, acid and alkali corrosion resistance, small error, good linearity in the range of 0~14 pH value.
- The pH composite sensor is made of low impedance sensitive glass film, which can be applied to pH measurement under various conditions. Fast response, high thermal stability.
- With good reproducibility, acid and alkali corrosion resistance, alkali error in the range of 0 to 14pH linear presentation.
- The reference system composed of Ag/AgCl and gel electrolyte salt bridge has stable half-cell potential and excellent anti-pollution performance.
- The annular PTFE diaphragm is not easy to block and can be used for longterm on-line monitoring.

Project	Specifications
Measuring range	0~14pH
Accuracy	≤±0.02pH
Working temperature	0~60℃
Response time	20sec
Drift	≤±0.1pH/24h
Sensitive membrane impedance	≤500MΩ
Slope	≥97% (25℃)
Zero point	7±0.5pH (25℃)
IP grade	IP68
Power supply	12-24VDC
Data output	MODBUS / RS485

Intelligent Conductivity Sensor

LH-DE21 0-2000μS/cm

LH-DE03 0-200μS/cm



Product Introduction

This sensor is used for conductivity of water measuring. The measuring principle is to place two electrodes with a fixed area and distance in the liquid to be measured, apply a constant voltage at both ends of the electrode plate (generally a sine wave voltage to avoid polarization effect), under the action of the electric field, ions in solution will move in a certain direction. Measure the current passing between the plates, and calculate to obtain the conductivity of the liquid to be measured. It is suitable for real-time conductivity monitoring in sewage treatment, aquaculture, environmental monitoring, waterworks and other industries.

Features

- Coaxial structure design, excellent resistance to changes in electrode constants, mechanical damage or temperature effects.
- 316L liquid connection material, better improve the measurement accuracy.
- Built in temperature sensor with automatic water temperature compensation function.
- Supports MODBUS / RS485 output.

Technical parameters	
Measuring range	K=0.1: 0.2 ~ 200μS/cm K=1: 2 ~ 2000μS/cm
Measuring accuracy	±2%F.S
Temperature element	NTC10K
Working environment	Temperature: 0~60℃; Humidity: ≤90%RH
Liquid connection material	316L stainless steel
Mounting thread	3/4"NPT thread
Cable	Standard 5 meters, OEM available
Calibration	1 point or two points calibration
Power supply	12~24VDC
Data output	MODBUS/RS485
IP grade	IP68

Intelligent ORP Sensor

LH-DR31

Product Introduction

ORP (REDOX potential) is a qualitative test of the REDOX capacity of water body. Since water in nature is a mixed system of REDOX, ORP electrode also reflects a mixed potential. It reflects a description of relative state. ORP value of water near a certain value point indicates a reduction or oxidation state of water, or a certain property of solution (sanitary level, etc.). In addition, temperature can affect the ORP value but cannot be corrected, so ORP electrodes generally do not have temperature compensation. It is suitable for ORP value real-time monitoring in various industries such as food processing, aquaculture, waterworks, education and scientific research.



Features

- Sensor uses antifouling material PTFE liquid coil, can withstand the pollution caused by hydrocarbons and sulfide. It can be used in severe environment, to ensure long-term monitoring process stability and service life.
- The gel electrolyte used is not easily disturbed by external ions, and will not be affected by changes in external pressure.
- Reliable sealing installation, IP68.
- Digital electrodes support MODBUS/RS485 output.

Technical parameters	
Measure range	-2000~2000mV
Resolution	1mV
Calibration	1 point calibration
Working temperature	0~60°C
Liquid joint material	Platinum、 PTFE
Mounting thread	3/4 NPTthread
Cable	Standard 5 meters (OEM available)
Sensor material	PC
IP grade	IP68

Online Fluorescence Dissolved Oxygen Sensor

LH-DY06

Product Introduction

This sensor is coated with a luminescent material. Green light from an LED is transmitted to the sensor surface. The green light excites the luminescent material. As the material relaxes it emits red light. The time it takes for the red light to be emitted is measured. Between the flashes of blue light, a red LED is flashed on the sensor and used as an internal reference. Increased oxygen in the sample decreases the time it takes for the red light to be emitted. The time measurements correlate to the oxygen concentration.



Features

- Green excitation fluorescence life detection technology, no electrolyte, no interference, no frequent calibration, stable and reliable measurement.
- Built-in temperature sensor automatic compensation function for water temperature.
- Support MODBUS/RS485 & 4-20mA current interface output.

Model	Parameter
Measuring range	0~20mg/L or 0~200% saturation
Accuracy	±5% or ±0.3mg/L
Response time	90s
Temperature sensor	DS18B20 digital temperature sensor
Working temperature	5 ~ 40°C
Power supply	12VDC±20%
Calibration	One point or two point calibration
Protection grade	IP68
Size	Φ34×222mm
Analog interface	4-20 mA (optional)
Pressure of work	<5bar
Digital interface	MODBUS /RS485
Cable length	8m
Lifetime of fluorescent cap	1 year
Material	The main body is stainless steel 316 and the sensitive film is silicone

Intelligent Dissolved Oxygen Sensor

LH-DO59

Product Introduction

This sensor is based on polarography to measure dissolved oxygen in water. The dissolved oxygen sensor is composed of cathode and anode. The cathode is platinum electrode and the anode is silver / silver chloride electrode. The cathode and anode are immersed in the electrolyte chamber, which is isolated from the external measurement environment through a diaphragm. Dissolved oxygen diffuses to the cathode through the diaphragm and is reduced on the cathode to generate current. The reduction current is positive with the transfer rate of dissolved oxygen into the electrolyte. At a given temperature, the current is proportional to the partial pressure of oxygen in the water. It can be used for the determination of dissolved oxygen in aquaculture river monitoring, sewage treatment, swimming pool and other water.



Features

- Adopt the principle of polarography, the test water sample needs to maintain fluidity.
- With appropriate oxygen permeable membrane, reference electrode and electrolyte, the electrode has better measurement accuracy and stability.
- Built in temperature sensor with automatic water temperature compensation function.
- Supports MODBUS / RS485 output.

Project	Specifications
Sensor material	Platinum cathode, silver/silver chloride reference electrode
Working condition	0 ~ 40°C
Temperature element	NTC10K
Response time	≤90s
Measuring range	0 ~ 20mg/L, 0 ~ 200%
Installation mode	3/4" NPT thread, flow-through or submersible mount
Cable	Standard 5 meters (OEM available)
Measuring principle	Two electrode polarography
Calibration	2 points calibration
Storage temperature	0 ~ 50°C (Dry without electrolyte)
Power supply	12 ~ 24VDC
Data output	MODBUS/RS485
IP grade	IP68

Constant Pressure Residual Chlorine Detection Module

LH-DL06

Constant pressure residual chlorine detection module includes pH electrode, residual chlorine electrode (platinum electrode, titanium electrode), installation backplane, flow meter and controller.

Features



Exclusive for running water testing



Self-cleaning function



Save water & environmental protection



Easy to maintain



Technical Specification	
Test Item	Residual chlorine, pH, temperature, flow rate
Measuring Range	Residual Chlorine: 0~3mg/L
	pH: 0~14
	Temperature: 0~60°C
	Flow rate: 16~40L/H
Accuracy	Residual Chlorine: 0.01~0.2:±0.02mg/L; 0.21~3.00mg/L; ±0.1mg/L or 5%, whichever is greater
	pH: ±0.1
	Temperature: ±0.5°C
	Flow rate: ±5%
Resolution	Residual Chlorine: 0.01 mg/L
	Current: 0.01 μA
	pH: 0.01
	Temperature: 0.1 °C
Temperature element	Flow rate: 1L/H
	NTC 10K
Flow rate requirement	16~40L/H, 20L/H optimal
Power	0.5W
Power supply	12~24VDC, standard 5m shielded cable, length OEM available
Data output	RS-485/MODBUS-RTU protocol
IP grade	BNC and flow meter interface: Ip65; Other interfaces and structural parts: IP68
Main material	PMMA/PC/PTFE/glass/titanium/platinum/304 stainless steel/silicone O-ring
Installation	Backplane installation

Online Intelligent Turbidity Sensor

LH-DZ09

Product Introduction

The online turbidity electrode adopts 90-degree scattered light method and uses a near-infrared light source to eliminate chromaticity interference and meets the ISO7027 standard. The LED emits a near-infrared beam to the sample at a certain angle. The beam will emit scattering when it hits the suspended matter in the sample during transmission. The detector set at 90° of the incident light receives the scattered light. The concentration of suspended matter in the sample is the intensity of the scattered light is directly proportional, so that the concentration of suspended matter in the sample and the turbidity can be calculated by measuring the intensity of the scattered light.



Features

- Can be used for low turbidity detection. (<1NTU, with flow slot).
- Comes with intelligent device with automatic cleaning function.
- Built-in temperature sensor with temperature compensation function makes measurement more accurate.
- Support MODBUS / RS485 4-20mA current interface output to facilitate system integration.

Model	LH-DZ09-200	LH-DZ09-1000	LH-DZ09-3000
Measuring range	0 ~ 200	0 ~ 1000	0 ~ 3000
Resolution	0.01,1	0.1,1	0.1,1
Indication error	≤5NTU, ≤±0.3NTU; >5NTU, ≤±6%	≤10NTU, ≤±0.5NTU; >10NTU, ≤±8%	≤10NTU, ≤±0.5NTU; >10NTU, ≤±8%
Operating temperature	5 ~ 40°C		
Deepest depth	Underwater 6M		
Digital interface	MODBUS/RS485		
Analog interface	4-20mA		
Powered by	12VDC±20%		
Calibration	One point or two point		
Protection class	IP68		
Installation method	Flow tank installation or Submerged installation		
Size	Φ54X150mm		

Online Intelligent Suspended Solids Sensor

LH-DX01

Product Introduction

This product uses the turbidity method to measure the concentration of suspended solids. The LED emits a near-infrared beam to the sample at a certain angle. The beam will scatter when it encounters suspended solids in the sample during transmission. It is set at a 90° angle to the incident light. The detector receives the scattered light, and the concentration of suspended solids in the sample is proportional to the scattered light intensity, so that the suspended solids concentration in the sample can be calculated by measuring the scattered light intensity.



Features

- Can be used for low concentration detection (<1mg/L, with flow cell) .
- Self-contained wiper with automatic cleaning function.
- Built-in temperature sensor.
- Corrosion-resistant housing, IP68, can work underwater for a long time.
- Support MODBUS/RS485/4-20mA current interface output.
- Wide test range (0~3000mg/L).

Item	LH-DX01-200	LH-DX01-1000	LH-DX01-3000
Measuring range (mg/L)	0 ~ 200	0 ~ 1000	0 ~ 3000
Resolution (mg/L)	0.01, 1	0.1, 1	0.1, 1
Accuracy (mg/L)	≤±0.3mg/Lor≤±6%	≤±0.5mg/Lor≤±8%	≤±0.5mg/Lor≤±8%
Working temperature	5 ~ 40°C		
Maximum diving depth	5 meters underwater		
Digital interface	MODBUS / RS485		
Analog interface	4-20mA		
Power supply	12VDC±20%, 1A		
Calibration	One or two point calibration		
Size	Φ54×150mm		
IP grade	IP68		
Installation method	Flow cell installation, immersion installation		
Flow cell (optional)	350×117×198mm		
cable length	5m (default)		
material	316 Stainless Steel		

Online Intelligent Uv254 COD Sensor

LH-DC18

Product Introduction

This instrument uses 254nm deep ultraviolet LED, which is small in size and long in life. The 254nm deep ultraviolet beam is absorbed by the organic matter dissolved in the water during the transmission process, and the degree of absorption is proportional to the concentration of organic matter, so that the content of organic pollutants in the sample can be evaluated by measuring the absorbance of the deep ultraviolet beam. The built-in 365nm wavelength light source is used for turbidity compensation, effectively eliminating turbidity interference.

Features

- Optical measurement, no reagents, no pollution.
- Built-in 254nm and 365nm dual optical paths, automatically compensate for turbidity interference.
- Comes with wiper, with automatic cleaning function to prevent biological attachment.
- Imported LED light source, with small drift, fast response, and more accurate measurement.
- The size is small, the installation is more convenient, and the water quality can be monitored on-line without interruption.
- Digital sensor, RS-485 interface, Modbus/RTU protocol.



Technical Parameter

COD range	0-600 mg/L equiv.KHP
COD accuracy	±5%F.S
COD resolution	0.1mg/L
TOC range	0-240 mg/L equiv.KHP
TOC accuracy	±5%F.S
TOC resolution	0.1mg/L
Turbidity range	0~300NTU
Turbidity accuracy	±5%F.S
Turbidity resolution	0.1NTU
Operating	5~40°C
Deepest depth	10 meters underwater
Digital interface	MODBUS/RS485
Analog interface	4-20mA
Powered by	12~24VDC
Calibration	One or two point calibration
Protection level	IP68
Installation method	Flow cell installation, immersion installation
Size	φ34×232mm
Cable length	5 meters (default)
Material	316 stainless steel

Digital Brix/Salinity Refractometer

LH-T55/LH-T95/LH-SA28

Introduction

The instrument adopts the optical principle and specializes in measuring the sugar content in water sample, food, fruit, crops. It widely used in food industry, beverage, agriculture, agriculture product processing industry, etc.



(LH-T55)

(LH-T95)

(LH-SA28)

Feature



Sensitive reaction,
accurate
measurement



Waterproof
design, stable
and durable



Shading cover design,
not afraid of
strong light, better
repeatability stability



Temperature
compensation
function



Wide measuring
range

Technical Data

Model	LH-SA28	LH-T55	LH-T95	
Measure range	0~28%	0~55Brix(%)	0~95Brix(%)	
Resolution	0.1%/0.1℃	0.1Brix(%) / 0.1℃		
Accuracy	±0.2%/±1℃	±0.2Brix(%) / 1℃	±0.3Brix(%) / 1℃	
Temperature compensation	10~80℃			
Working condition	10~40℃			
Sample amount	≈0.2mL (3~5 drops)	≈0.2mL (3~5 drops)	≈0.5mL (7~10 drops)	
Measuring time	≈3S			
Power supply	2 *AAA batteries	Built-in 3.7V lithium battery		
Size	154x52x44mm			
Weight	140g			

Rapid Detection Test Strips

Introduction

The rapid detection series are semi-quantitative detection products, and the detection results are interval values, so there are no concepts such as precision and accuracy, and the sensitivity is the lowest detection limit. It is widely used in on-site rapid detection water quality of urban water supply, food and beverage, environment, medical treatment, chemistry, pharmacy, thermoelectricity, papermaking, breeding, bioengineering, fermentation process, textile printing and dyeing, petrochemical industry, water treatment and other fields.



Technical Data

Product Name	Measuring range	Packing
Ammonia nitrogen test strip	0-0.5-1-3-5-10-20mg/L	100 tests/box
	0-2-5-10-30-50-70-100mg/L	
	0-10-30-60-100-200-400mg/L	
	0-50-120-200-270-350-420-500mg/L	
	0-5-10-30-60-100-200-400-1000mg/L	
Hydrogen peroxide test strip	0-0.5-2-5-10-25mg/L	100 tests/box
	1-3-10-30-100mg/L	
	100-200-400-600-800-1000mg/L	
Peracetic acid test strip	0.5-1-2-4-10-20-40mg/L	100 tests/box
	25-100-200-300-500mg/L	
	100-200-500-1000-1500-2000mg/L	
Residual chlorine test strip	0-0.5-1-3-5-10mg/L	100 tests/box
	0-0.5-1-3-5-7-10-20-25mg/L	
	0-25-50-100-200-500mg/L	
	0-20-50-100-300-500-700-1000-1500mg/L	
pH test trip	0-1-2-3-4-5-6-7-8-9-10-11-12-13-14 pH	100 tests/box
	4.5-5-5.5-6-6.5-7-7.5-8-8.5-9-9.5-10 pH	
	0-0.5-1.0-1.5-2-2.5-3-3.5-4-4.5-5-5.5-6-6.5-7 pH	
	7-7.5-8-8.5-9-9.5-10-10.5-11-11.5-12-12.5-13-13.5-14 pH	
Ferrous test strip	2-10-25-50-100-250-500mg/L	100 tests/box

Technical Data

Product Name	Measuring Range	Packing
Sulfur dioxide test strip	0-10-30-50-100-180-400mg/L	100 tests/box
Chlorine dioxide test strip	0-10-25-50-100-200-300-500-800mg/L	100 tests/box
Mercury test strip	0-10-20-50-100-200mg/L	100 tests/box
Quaternary ammonium Salts test strip	0-10-50-100-250-500mg/L	100 tests/box
Ozone (in air) test strip	0-5-10-20-30-40mg/m³	100 tests/box
Phosphate test strip	0-10-25-50-100-250-500mg/L	100 tests/box
Sulfate test trip	<200-200-400-800-1200-1600mg/L	100 tests/box
Chromium/CR(VI) test strip	0.5-2-5-10-30-50-100mg/L	100 tests/box
Aluminum test trip	10-25-50-100-250mg/L	100 tests/box
Chloride ion test strip	500-1000-1500-2000-3000mg/L	100 tests/box
Urea test strip	0-25-50-100-200-300mg/L	100 tests/box
Lead test strip	0-20-50-100-200-500mg/L	100 tests/box
Low hardness test strip	0-5-10-20mg/L	50 tests/box
Water hardness test strip	0-25-50-120-250-425mg/L	100 tests/box
Copper test strip	0-10-30-100-300mg/L	100 tests/box
Vitamin C test strip	50-100-200-300-400-700-1000-2000mg/L	100 tests/box
Nitrate test strip	5-10-25-50-100-250-500mg/L	100 tests/box
Zinc test strip	10-40-100-250mg/L	100 tests/box
Sulfite test strip	0-10-30-50-100-180-400mg/L	100 tests/box
Nitrite test strip	1-5-10-20-40-80mg/L	100 tests/box
Residual chlorine/Total chlorine/pH 3 in 1 test strip	Residual chlorine: 0-0.5-1-3-5-10mg/L	100 tests/box
	Total chlorine: 0-0.5-1-3-5-10mg/L	
	pH:6.2-6.8-7.2-7.8-8.4-9.0pH	

Note:Other specifications, parameters can be customized as required

Rapid Detection Test Kit

The rapid detection series are semi-quantitative detection products, and the detection results are interval values, so there are no concepts such as precision and accuracy, and the sensitivity is the lowest detection limit.



Technical Data

Product Name	Measuring range	Packing
COD test box	0-30-60-120-200- ≥250mg/L	50 tests/box
Ammonia nitrogen test box	0.01-0.05-0.1-0.2-0.4-0.6-0.8-1.0mg/L	25 tests/box
Zinc test box	0-0.1-0.2-0.5-1.0-2-5mg/L	50 tests/box
Fluorine test box	0-0.1-0.2-0.3-0.5-0.7-1.0-1.5mg/L	50 tests/box
Phosphorus test box	0.05-0.1-0.2-0.3-0.4-0.5-0.7-1.0mg/L	25 tests/box
Sulfide test box	0.02-0.05-0.1-0.2-0.4-0.5-0.6-0.8mg/L	30 tests/box
Chromium/CR(VI) test box	0.05-0.1-0.2-0.3-0.4-0.6-0.8-1.0mg/L	25 tests/box
Aluminum test box	0-0.01-0.02-0.04-0.06-0.1-0.15-0.2mg/L	50 tests/box
Chloride test box	20-400mg/L	50 tests/box
Manganese test box	0.1-0.5-1.0-2.0-5.0-10.0mg/L	25 tests/box
Urea test box	0.5-1.0-1.5-2.0-2.5-3.5-5.0-8.0mg/L	20 tests/box
Nickel test box	0-0.05-0.1-0.2-0.3-0.4mg/L	25 tests/box
Cyanide test box	0.005-0.01-0.05-0.1-0.2-0.5mg/L	50 tests/box
Low hardness test box	0.4-20mg/L	50 tests/box
Copper test box	0.2-0.4-1.0-2.0-3.0-5.0mg/L	25 tests/box
Nitrite test box	0.01-0.03-0.05-0.1-0.2-0.3-0.4-0.5mg/L	35 tests/box
Total iron test box	0.05-0.1-0.2-0.3-0.4-0.6-0.8-1.0mg/L	25 tests/box
Silver test box	0-0.5mg/L	50 tests/box
Chlorine dioxide test box	0.05-0.1-0.2-0.3-0.5-0.8-1.4-2.0mg/L	25 tests/box
Lead test box	0.2-0.5-0.8-1.0mg/L	50 tests/box
DPD Ozone test box	0.05-0.1-0.2-0.3-0.4-0.5-0.7-1.0mg/L	50 tests/box
DPD Residual chlorine test box	0.05-0.1-0.2-0.3-0.4-0.5-0.7-1mg/L	50 tests/box
	0.1-0.2-0.4-0.6-0.8-1.0-1.5-2.0mg/L	
DPD Total chlorine test box	0.05-0.1-0.2-0.3-0.4-0.5-0.7-1.0mg/L	50 tests/box
	0.1-0.2-0.5-1-2-5-10mg/L	
Total alkalinity test box	10-200mg/L	50 tests/box
	100-2000mg/L	
Total hardness test box	10-200mg/L	50 tests/box
	30-600mg/L	
	pH:4-10pH	
Aquaculture Test box	Ammonia nitrogen: 0-1.8mg/L	50 tests/box
	Sulfide: 0.2mg/L	
	Dissolved oxygen: 0-10mg/L	
	Nitrite: 0.01-1mg/L	
Heavy metal test box	Lead: 0-1mg/L	20 tests/box
	Cadmium: 0-0.5mg/L	
	Mercury: 0-0.5mg/L	

Note:Other specifications, parameters can be customized as required

Rapid Detection Colorimetric Tube

Introduction

The rapid detection series are semi-quantitative detection products, and the detection results are interval values, so there are no concepts such as precision and accuracy, and the sensitivity is the lowest detection limit.

It is widely used in on-site rapid detection water quality of urban water supply, food and beverage, environment, medical treatment, chemistry, pharmacy, thermoelectricity, papermaking, breeding, bioengineering, fermentation process, textile printing and dyeing, petrochemical industry, water treatment and other fields.









Technical Data



Product Name	Measuring range	Packing
COD test tube	0-30-60-120-200-250mg/L	50 tests/box
	0-100-300-400-500-600-800mg/L	
Ammonia nitrogen test tube	0-0.2-0.5-1-2-5-10mg/L	50 tests/box
Ozone test tube	0-0.1-0.2-0.5-1-2-5-10mg/L	50 tests/box
Cadmium test tube	Above 0-0.1-0.3-0.5-1-3mg/L	50 tests/box
Hydrogen peroxide test tube	0.02-0.1-0.2-0.5-1-5mg/L	50 tests/box
Peracetic acid test tube	0.1-0.2-0.5-1-2-5-10mg/L	50 tests/box
Formaldehyde test tube	0-0.1-0.2-1-2-5mg/L	50 tests/box
Chromium/CR(VI) test tube	0-0.05-0.1-0.2-0.5-1-2-5mg/L	50 tests/box
Nickel test tube	0-0.5-1-2-5-10mg/L	50 tests/box
Cyanide test tube	0.05-0.2-0.5-1-2-5mg/L	50 tests/box
Copper test tube	0-0.1-0.3-0.5-1-2-3-5mg/L	50 tests/box
Nitrate test tube	1-2-5-10-20-45mg/L	50 tests/box
Zinc test tube	0-0.5-1-2-5-10mg/L	50 tests/box
Nitrite test tube	0-0.05-0.1-0.5-1-3mg/L	50 tests/box
Total Nitrogen test tube	0-5-10-25-50-100mg/L	50 tests/box
Total chromium test tube	0.5-1-2-5-10-20mg/L	50 tests/box
Total phosphorus test tube	0.1-0.2-0.5-1-2-5-10mg/L	50 tests/box
	0.5-1-3-5-10-20mg/L	
Total iron test tube	0-0.2-0.5-1-2-5-10mg/L	50 tests/box

Note:Other specifications, parameters can be customized as required

SN	Item	Model	Pic	Spec
1	Multi-parameter Portable Water Quality Detector	LH-M900		Absorbance Monitoring Range:0~3.0Abs Absorbance Resolution:0.001Abs Light source life:100000hours Rated Power:0.3w Temperature:0~50℃ Light Path Stable:≤±0.005Abs/30min Ebclosure Rating:IP65 Filter life:5 years Operation Repetition:≤±0.01Abs Size:170*72*44mm Weight:236g
2	Portable Turbidity Analyzer	LH-Z10A (20NTU)		Range:0-20NTU Accuracy:±0.1NTU or ±5%NTU Repeatability: <5NTU,≤±0.05NTU ≥5NTU,≤±1%NTU
2	Portable Turbidity Analyzer	LH-Z10A (1000NTU)		Range:0-1000NTU Accuracy:±0.3NTU or ±8%NTU Repeatability: <10NTU,≤±0.1NTU ≥10NTU,≤±1%NTU
3	Portable pH meter	LH-P210		Measuring range:0-14Ph, -1999.9~1999.9mV,0.0~80.0℃ (32~176°F) Accuracy:0.01pH,0.1mV,0.1℃ (0.1°F) IP65
4	Portable DO meter	LH-D701		Range:0-20.00mg/L concentration, 0~200%saturation Resolution:0.01mg/L,0.1% Accuracy:≤±0.30mg/L,≤±3.0% IP65
5	Portable Water Quality Analyzer	LH-C660		Ammonia Nitrogen 0-100mg/L COD 0-15000mg/L Total Phosphorus 0-20mg/L Total Nitrogen 0-500mg/L

6	Benchtop Water Quality Analyzer	LH-T725		Accuracy:≤±5% Repeatability:3% Absorbance detection range:0-3.5Abs Optical path stability:≤±0.002Abs/30min Absorbance resolution:0.001Abs Operation Repeatability:≤±0.005Abs Light source life:100000hours Filter life:5 years
7	4 Vial Reactor	XC-200		Temperature control range: Room temperature~180℃ Reaction temperature:50~180℃ Temperature control accuracy:≤±0.1℃ Temperature control tolerance:≤±1℃ Capacity:Can treat 4 samples at the same time Power supply:DC 12V/10A
8	16 Vial Reactor	LH-TX6		Operating temperature:45~180℃ Temp resolution:±0.1℃ Temperature range:45~180℃ Temperature accuracy:±0.5℃ Responding time:0-120mins Temperature region:2(two temperature regions can be set) Capacity:16 vials(8+8) Power consumption:<300W Display screen:4.3 inch color screen Power supply:DC 24V/12A
9	Online Residual Chlorine Sensor	LH-DL05		Measuring range:0~20.00mg/L Limit of detection:0.05mg/L pH range:4~8 Accuracy:±10% (DPD) Repeatability:0.05mg/L or 5% Response time: T90<120s Flow rate:NLT 20L/H
10	Online Fluorescent DO Sensor	LH-DY06		Measuring range:0~20.00mg/L or 0~200% saturation Accuracy:0.01mg/L or 0.1% Resolution:±5% or ±0.3mg/L Response time:3~5min Temperature sensor:DS18B20 Digital temperature sensor Operating Temperature:5~40℃ Temperature accuracy:±0.5℃ Operating pressure:<5bar Digital interface:MODBUS/RS-485 Power supply:12VDC±20% Protection grade:IP68
11	Online Turbidity Sensor	LH-DZ09		Range:0-20NTU/0-200NTU/ 0-1000NTU/0-3000NTU

12	Digital Brix Refractometer	LH-T55		Brix:0-55% Accuracy:0.2% Measuring time:3s
13	Pentype pH meter	LH-P300		
14	Pentype EC meter	LH-N300		
15	Pentype ORP meter	LH-M300		
16	Benchtop pH meter	LH-P800		
17	Benchtop EC meter	LH-N800		

18	Residual Chlorine Colorimeter	LH-C01F		Measuring range:0.00~3.00mg/L Accuracy:±0.05mg/L(concentration<1.0mg/L) ±5%mg/L(concentration≥1.0mg/L)
19	Total Chlorine Colorimeter	LH-C10F		Measuring range:0.00~12.00mg/L Accuracy:±5%mg/L